

1. CORTROL Prerequisites

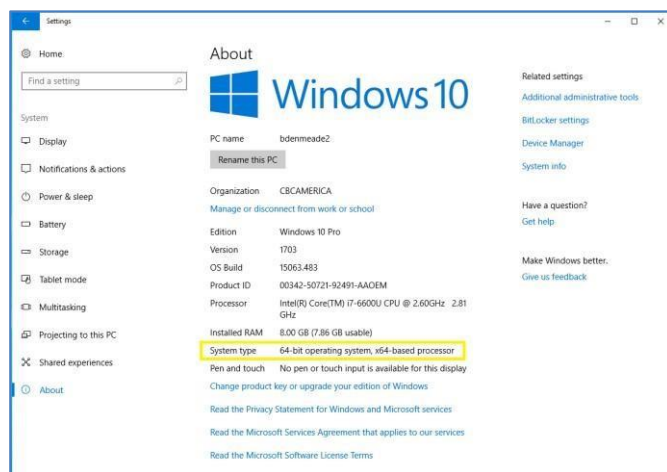
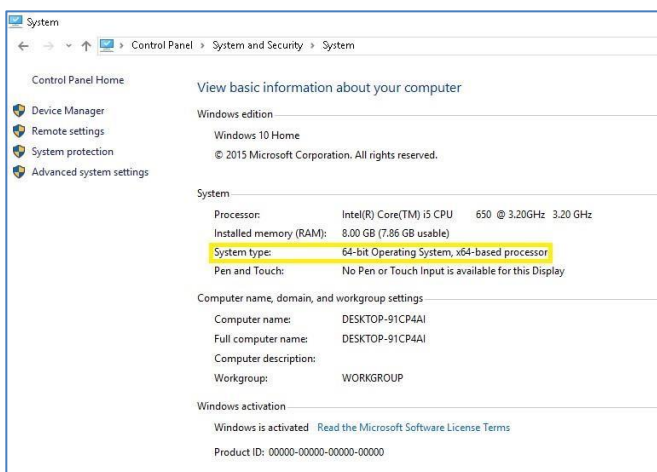
There are a few requirements for the system the GANZ CORTROL Management & Client will run on.

The ports for remote connections should be enabled through the firewalls (default ports are 60554 for the GANZ CORTROL Client and 8080 for streaming server and external services)

The Bit version of Windows, 32-Bit vs. 64-Bit on the PC/Server should be confirmed.

For Windows 7: To confirm your Windows bit version, go to Control Panel > System and confirm *System type* as 32-Bit or 64-Bit.

For Windows 10: To confirm your Windows bit version, go to “Settings > System and confirm *System type* as 32-Bit or 64-Bit.



2. CORTROL Console Installer

The CORTROL Client Installer can be found at [Ganz Security/Software](#) includes both the CORTROL Management Console, and the CORTROL Client installer.

From the link please select and download either CORTROL Console 32bit or 64bit, depending on the Windows OS bit version of the host server.

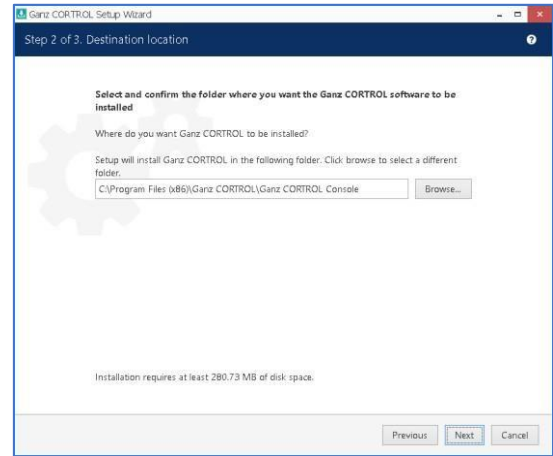
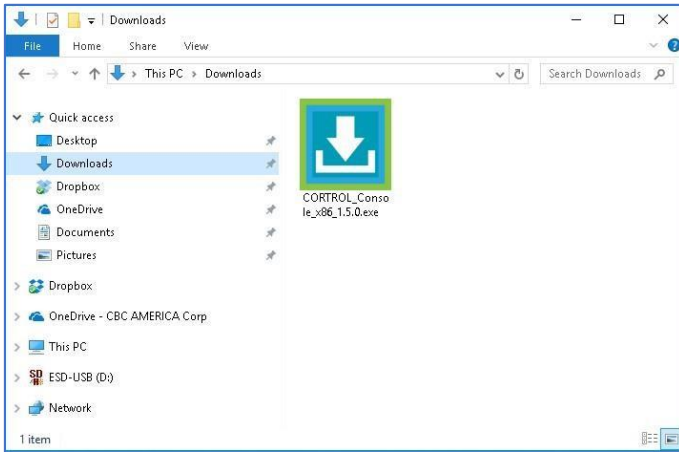
For convenience, links to the 32Bit, and 64Bit versions of the CORTROL Console are provided below.

Note: For most browsers, any downloaded files can be found in the Windows Download folder.

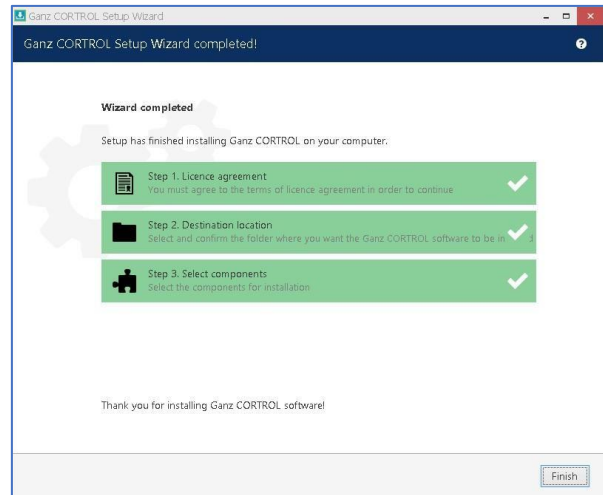
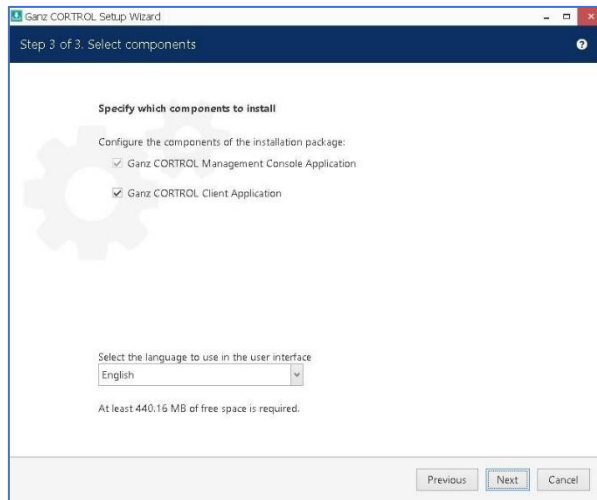


3. Console & Client Installation

- Navigate to the Microsoft Windows download folder.
- Double click on the CORTROL Console installer, to begin the installation process.
- Select the needed language and click *Next*.
- Accept the terms of agreement and click *Next*.
- Accept default installation location and click *Next*. (Change location destination if required.)



- Specify which components to install – Only Client is listed.
- Select the needed language and click *Next*.
- Once installation is complete, click *Finish*.

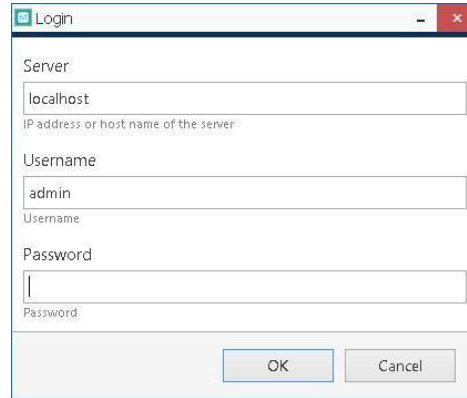
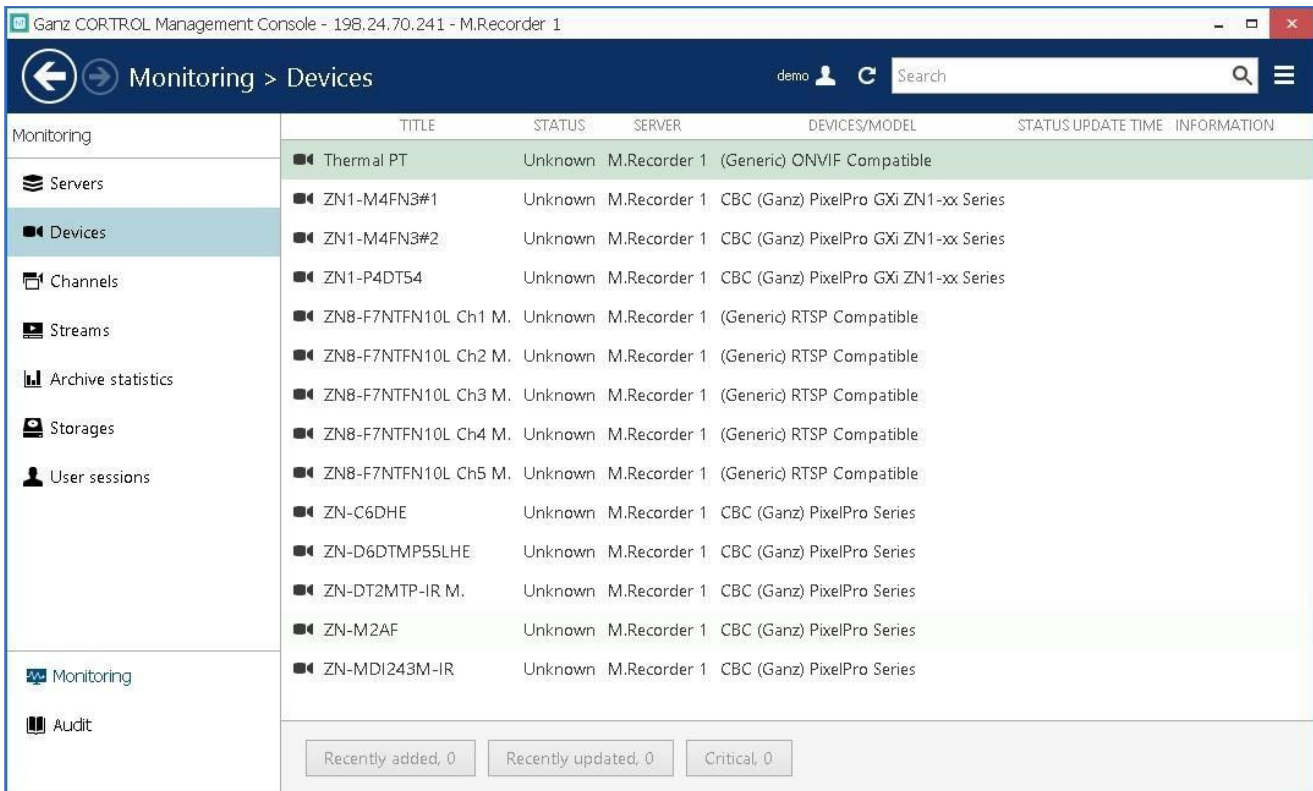


4. Console Configuration

After the Console/Client installation, the Console interface will auto launch.

The Console will require configuration, to connect to the CORTROL Global Demo Server.

- Under “Server”, enter the Server IP address: 12.222.132.13
- Under “Username”, enter “demo” all lower case.
- Under “Password”, enter “2468”.
- Select “Ok” to launch the CORTROL Management Console.

Monitoring	TITLE	STATUS	SERVER	DEVICES/MODEL	STATUS UPDATE TIME	INFORMATION
Servers	Thermal PT	Unknown	M.Recorder 1	(Generic) ONVIF Compatible		
Devices	ZN1-M4FN3#1	Unknown	M.Recorder 1	CBC (Ganz) PixelPro GXi ZN1-xx Series		
	ZN1-M4FN3#2	Unknown	M.Recorder 1	CBC (Ganz) PixelPro GXi ZN1-xx Series		
Channels	ZN1-P4DT54	Unknown	M.Recorder 1	CBC (Ganz) PixelPro GXi ZN1-xx Series		
Streams	ZN8-F7NTFN10L Ch1 M.	Unknown	M.Recorder 1	(Generic) RTSP Compatible		
Archive statistics	ZN8-F7NTFN10L Ch2 M.	Unknown	M.Recorder 1	(Generic) RTSP Compatible		
	ZN8-F7NTFN10L Ch3 M.	Unknown	M.Recorder 1	(Generic) RTSP Compatible		
Storages	ZN8-F7NTFN10L Ch4 M.	Unknown	M.Recorder 1	(Generic) RTSP Compatible		
User sessions	ZN8-F7NTFN10L Ch5 M.	Unknown	M.Recorder 1	(Generic) RTSP Compatible		
	ZN-C6DHE	Unknown	M.Recorder 1	CBC (Ganz) PixelPro Series		
	ZN-D6DTMP55LHE	Unknown	M.Recorder 1	CBC (Ganz) PixelPro Series		
	ZN-DT2MTP-IR M.	Unknown	M.Recorder 1	CBC (Ganz) PixelPro Series		
	ZN-M2AF	Unknown	M.Recorder 1	CBC (Ganz) PixelPro Series		
	ZN-MDI243M-IR	Unknown	M.Recorder 1	CBC (Ganz) PixelPro Series		

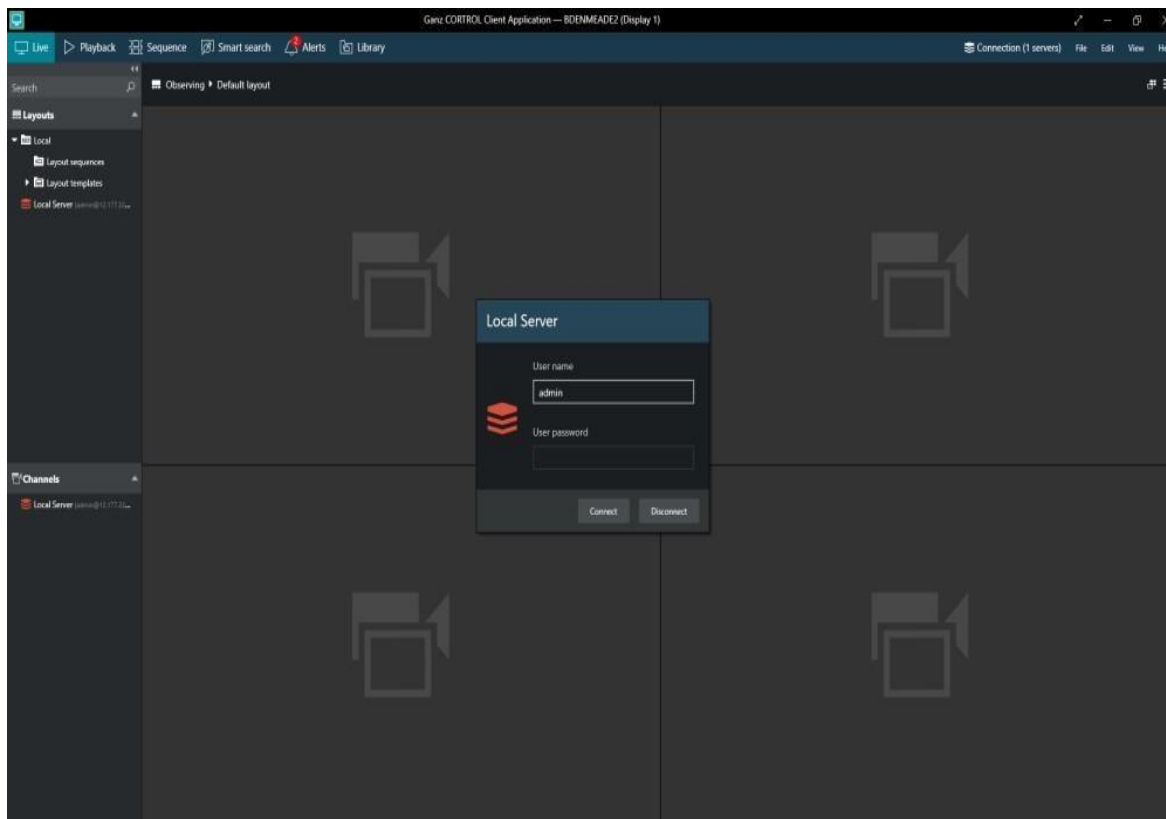
Recently added, 0 Recently updated, 0 Critical, 0

The GANZ CORTROL Management Console is only allowed access for the Monitoring and Audit functionality. Please reference the [CORTROL Administrative Manual](#), page 232 and page 235 for navigation, and usage.

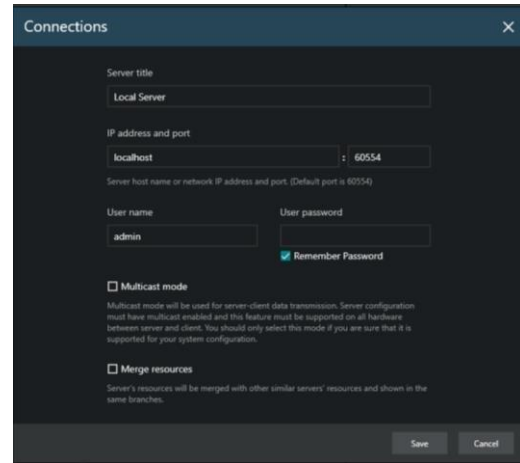
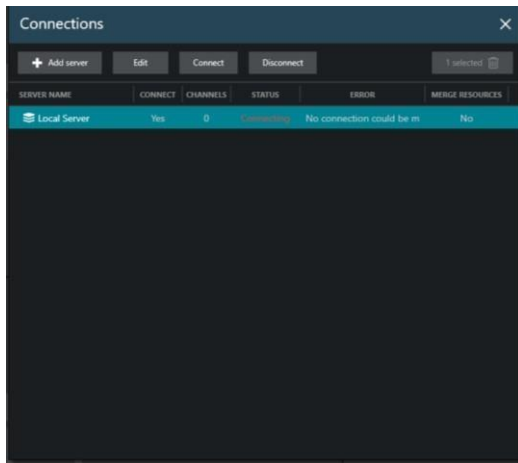
5. Client Configuration

To launch the CORTROL Client interface, double click on its desktop icon. 

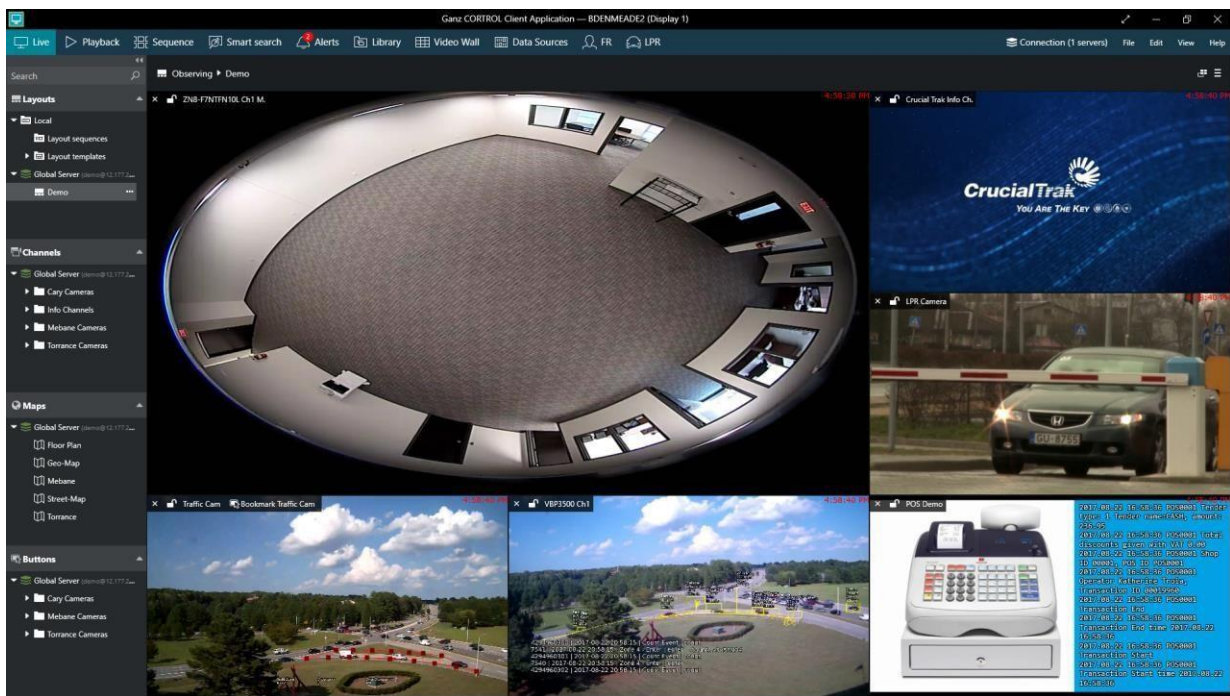
The Client will require configuration, to connect to the CORTROL Global Demo Server.



- Select “Disconnect”, as no server is currently configured.
- Select “Connection” located in the top right corner.
- Select the “Local Server” listed under “Connections, and then select “Edit”
- Leave the default “Server title”
- For the “IP address and port” enter: 12.222.132.13 – Leave the default port at 60554. • Enter “demo” all lower case for the “User name”
- Enter “2468” for the password.
- Select “Remember Password” and then click on “Save”.
- Select the “Local Server” listed under “Connections” and then click on “Connect”.
- Click on the “X” to close / exit, “Connections”



The GANZ CORTROL Client has no restriction on its functionality. Please reference the [CORTROL Client Manual](#) for navigation, and usage.



6. Web Browser Client

To launch the CORTROL Web Client interface, click on the following link; [Web Browser Client](#). Enter the User ID: “demo” – all lower case.

Enter the Password: “2468” – select “Login”

Please reference the [CORTROL Administrative Manual](#), starting on page 146 for navigation, and usage.

