



**SMARTER
ENTERPRISE
SECURITY**



CORTROL Global features an intuitive client interface for Monitoring, Reporting, and Exporting.

By uniting the **actionable intelligence** in a central security command center, CORTROL Global delivers enhanced situational awareness, optimizing incident management and creating a safer environment for large and challenging security environments.

Interactive Maps

OpenStreetMap, GPS metadata, PNG, JPG, TIF, BMP and static GIF.

Fisheye Dewarping

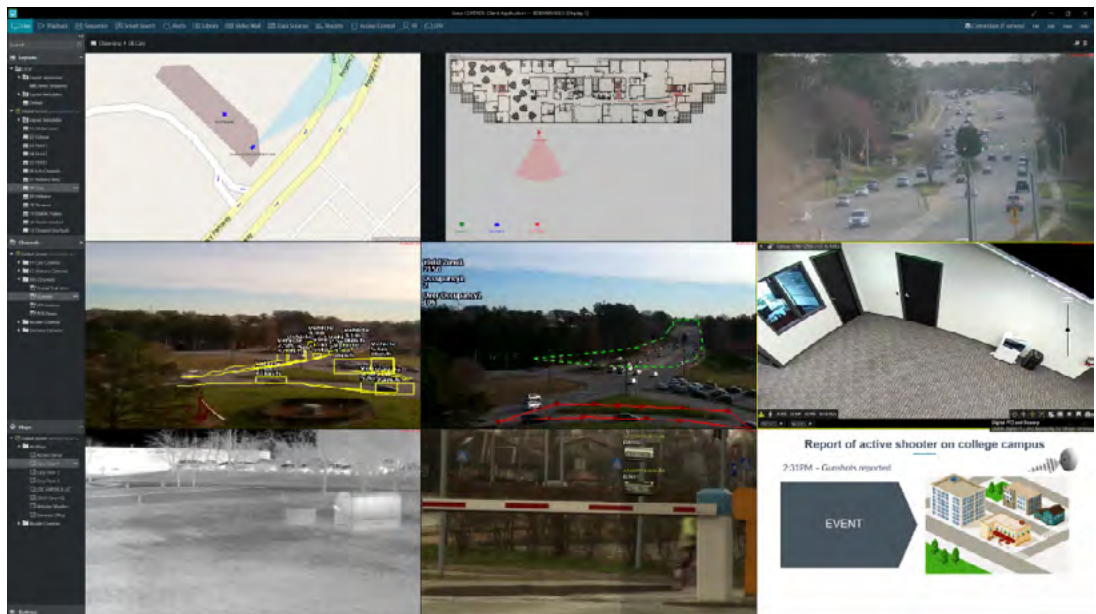
Client side Dewarping and Immersion for Fisheye cameras.

AI / Analytics Support

Server and Camera side analytics metadata support w/ Notification Events and Reports.

Events & Actions Notifications

Advanced Multi-layer Events & Actions notification system with Mobile notification.



RTSP Video Streaming

RTSP stream from DVR's, eNVR's, Encoders, and network appliances.

Information Channels

Streaming informational or emergency video.

GANZ CONTROL GLOBAL LICENSES			
ZNS-GStart100	100ch CORTROL Global Start License	MODULE LICENSES	
ZNS-Global10	Additional 10 Ch Global License	GANZ CONTROL LPR MODULE LICENSES	
ZNS-Global50	Additional 50 Ch Global License	ZNS-LPR-2	Supports 2 LPR Channels
ZNS-Global100	Additional 100 Ch Global License	ZNS-LPR-U	Supports Unlimited LPR Channels
ZNS-Global500	Additional 500 Ch Global License	FACIAL RECOGNITION MODULE LICENSES	
ZNS-Global1K	Additional 1K Ch Global License	ZNS-FR-2	Supports up to 2 channels, recognizes up to 5 faces in 10 seconds
ZNS-Global5K	Additional 5K Ch Global License	ZNS-FR-U	Supports 200 FPS from up to 10 channels, recognizes up to 500 faces in 10 seconds

Advancing Monitoring Response Times. Decreasing the Cost of Ownership - with an identical feature set.

Mobile Geomapping



CORTROL Global can turn a smart phone into a GPS security tracker (ideal for tracking and the safety of students, children, etc.). Equipped with a panic button, CORTROL Global sends live video with Geolocation in critical situations.

Private Cloud



Smart City applications require open, ubiquitous data, owned by the city. CORTROL Global's virtual machine option allows you to have a private cloud, simultaneously satisfying those enigmatic requirements.

Event and Action Manager



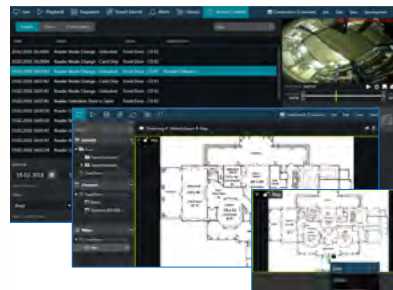
CORTROL Global automates and accelerates responses with the pre-programmed event and action manager when an immediate response is necessary, regardless of the circumstance.

Analytics



It is challenging and time-consuming to search through hours of video archives — also a waste of hard disk. CORTROL Global can index its archives with Analytics, allowing searches by facial attribute, license plate, or any video analytic criteria.

Access Control Integration



Access control is an efficient security technique but is vulnerable to persistent attacks such as Identification Theft or Tailgating. CORTROL Global provides the most effective and economical tool for visual verification in the industry.

Video Wall



CORTROL Global's Video Wall feature allows the efficient management of large-display installations. It is vital for operating enterprise video surveillance systems, providing the ability for rapid visual verification when reacting to alarm events.



The D-1X and D-2XR **Enterprise Servers** are developed on Dell EMC infrastructure and designed to provide the flexibility, performance and scale needed to support the high camera counts, megapixel resolutions, high frame rates and long retention times demanded by the industry. Optimized to work with Ganz® CORTROL Global Series Surveillance software.



CORTROL MODULES

LPR Module



The LPR module is software for detecting, recognizing and registering vehicle license plates. It offers a very high level of reading reliability, an intuitive installation process, and significant usability characteristics.

The software is ideally suited for vehicle access and traffic control. CORTROL also offers multiple customization possibilities for specific license plates and different types of transportation.

Face Recognition



The Face Recognition module is a biometric application that is designed to work with CORTROL Global.

The advanced technology assures system performance and reliability with live face detection, simultaneous multiple face recognition and fast face matching in 1-to-1 and 1-to-many modes. CORTROL Face Recognition is ideally suited for human resource control as well as security and enforcement applications.

VCA Module



The VCA module is a real-time video analytics engine that utilizes advanced image processing algorithms to turn video into actionable intelligence. At the core of the product is an advanced object tracking engine that continually tracks moving and stationary targets. Easy to set up, CORTROL VCA automatically adjusts to site conditions, making it ideal for both experienced and untrained personnel to use.

API Module



The API module offers customizable integration with other software systems in the form of the HTTP API URI, which allows developers to retrieve live and archive streams in HTML 5 compatible formats. The API module also has an extensive collection of APIs such as PTZ control, implementing external services or other system configurations. URIs utilize HTTP Digest authentication to ensure secure access.

Ganz CORTROL Global is one of the most comprehensive enterprise-level VMS solutions on the market, featuring interactive maps linked to alarms; an exceptional event and action manager; analytics tools; video wall support and proactive components.

The edge recording ensures your data safety by synchronizing with IP storage devices, archive replication, advanced system health monitoring, and failover, which reduces the disruption of your video surveillance recordings to zero. All this, plus various customization possibilities and Ganz's flawless technical support.

For the latest product information and release notes go to ganzcontrol.com