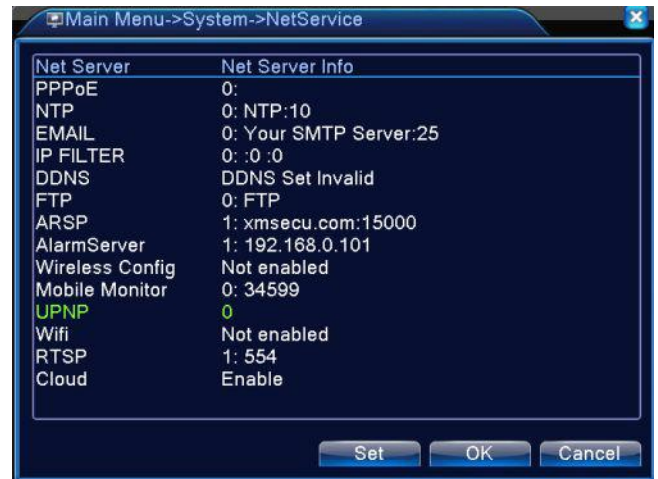
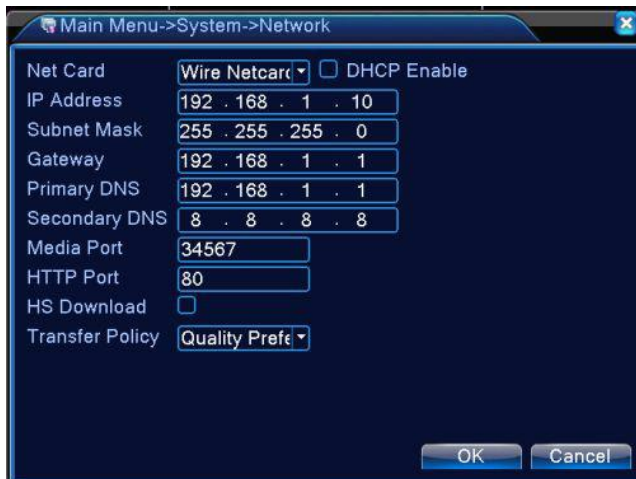


CORTROL AHD DVR Setup

Ver. 1.0.3

1. In order to connect a Genstar AHD DVR to CORTROL, create a new device for each of the analog channels. If you have an 8 channel AHD DVR, you will need to create 8 device entries.
2. Place the AHD DVR on to the same network as the IP Cameras are on.
3. Configured the AHD DVR network information.
 - a. Enter all IP information (Should match IP range of CORTROL Server)
 - b. Confirm Web Port: Default is 80
 - c. Confirm RTSP port: Default is 554



4. Configure the recording parameters of the AHD DVR, such as the FPS, and Quality.

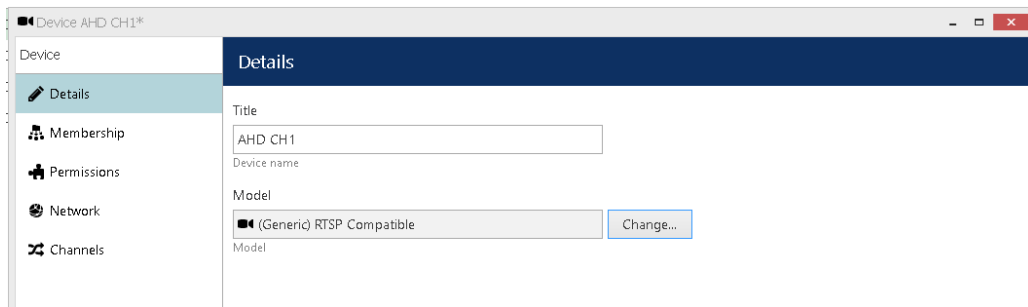


CORTROL AHD DVR Setup

Ver. 1.0.3

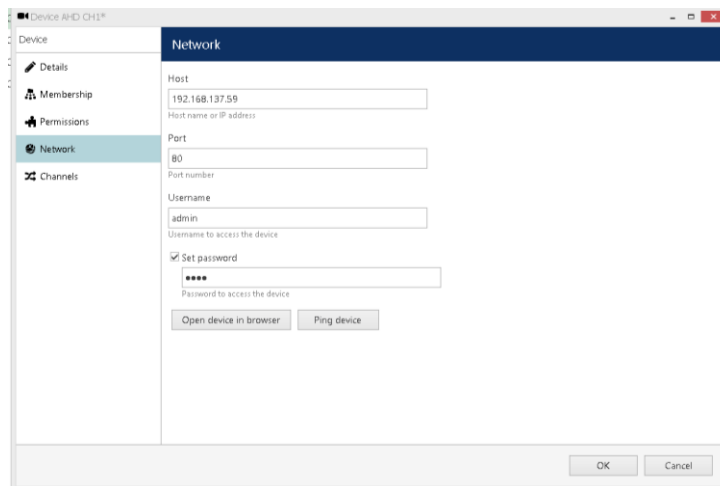
5. CORTROL

- a. Sign into CORTROL Management Console
- b. Select “Devices” found on the left side panel.
- c. Select “New device” from the row of buttons across the top.
 - i. Select Details:
 1. Enter title: AHD Chx (*Were x is the channel number being added*)
 - a. Note: the title should reflect the channel, example: AHD CH1.
 2. Model: Select “(General) RTSP Compatible” for the model.



- ii. Select Network:
 1. Host: Enter AHD Encoder IP address
 2. Port: HTTP / Web port of AHD Encoder
 3. Username: “Default is admin”
 4. New password: “Default is none”
 5. Click on “Ok”

Note: If the default user name and or password do not match, update accordingly.

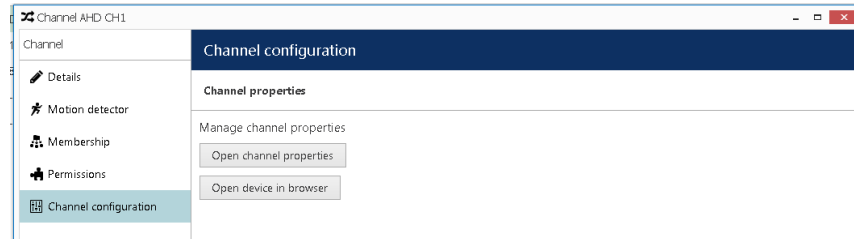


- d. Repeat the above “New device” entry for each of the analog channels of the DVR.

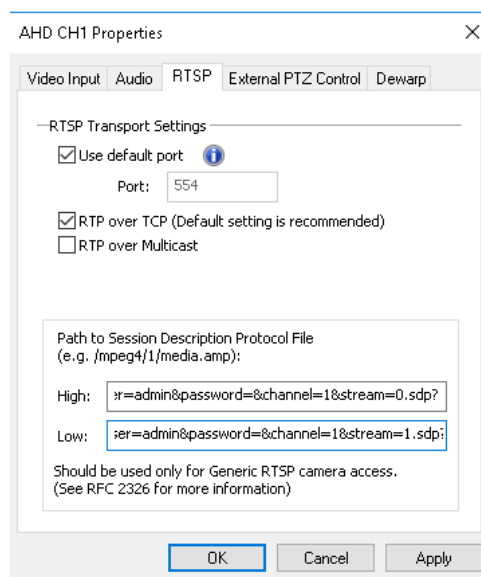
CORTROL AHD DVR Setup

Ver. 1.0.3

- e. Next, lets add the RTSP string as required.
- f. From the Management Console options, select Channels from the left panel.
 - i. Select the first channels labeled AHD Chx (*Where X indicates the video channel*)
 - ii. Select “Edit” from the row of buttons across the top.
 - iii. Select “Channel configuration” from the left panel options.



- iv. Select open channel properties.
- v. Select the RTSP tab
 1. Unless the default settings do match programming, leave RTSP transport settings at default configuration.
 2. Enter the following string into High for Main stream;
 - a. /user=admin&password=&channel=1&stream=0.sdp?
 3. Enter the following string into Low for secondary stream;
 - a. /user=admin&password=&channel=1&stream=1.sdp?
 4. Select ok, to return to Channel Configuration window
 5. Click cancel to close window.

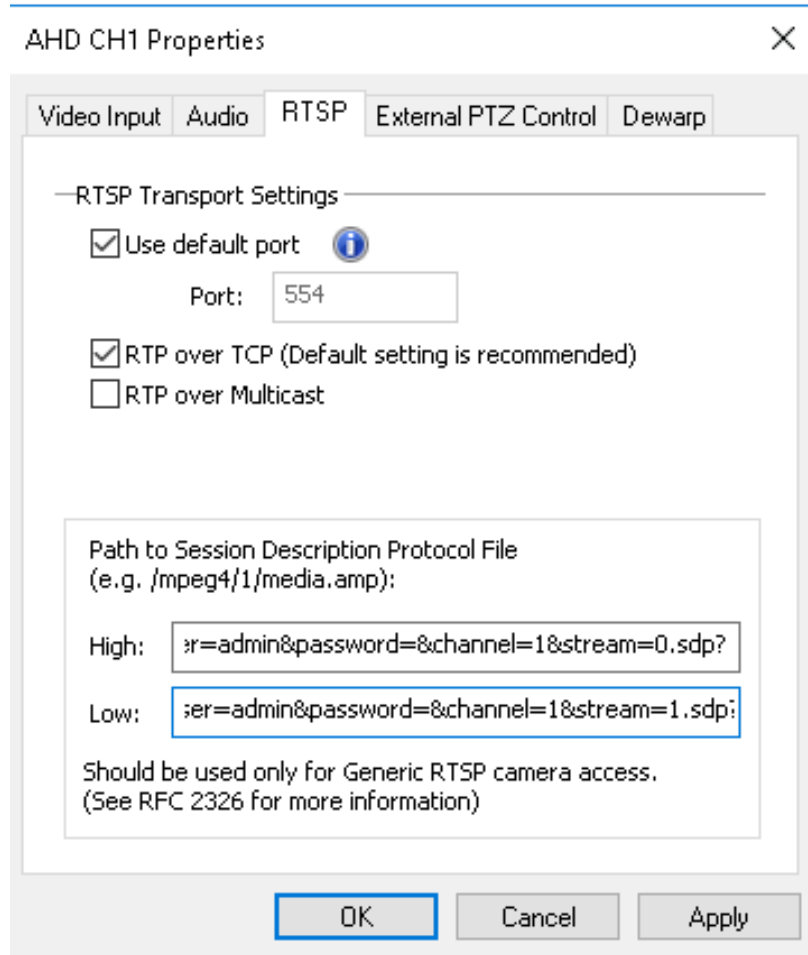


- g. Repeat above steps for each RTSP channel that was added.

CORTROL AHD DVR Setup

Ver. 1.0.3


- i. When entering the string for each addition RTSP channel, be sure to change the “1&stream” part to reflect the next channel number.
 - 1. Example for Ch2: /user=admin&password=&channel=2&stream=0.sdp?



AHD CH1 Properties

Video Input Audio **RTSP** External PTZ Control Dewarp

—RTSP Transport Settings—

Use default port 

Port:

RTP over TCP (Default setting is recommended)

RTP over Multicast

Path to Session Description Protocol File
(e.g. /mpeg4/1/media.amp):

High:

Low:

Should be used only for Generic RTSP camera access.
(See RFC 2326 for more information)