



Accessories & Kits

Lock Boxes for Digimaster DVRs and PixelMaster NVRs

Lock Box Series

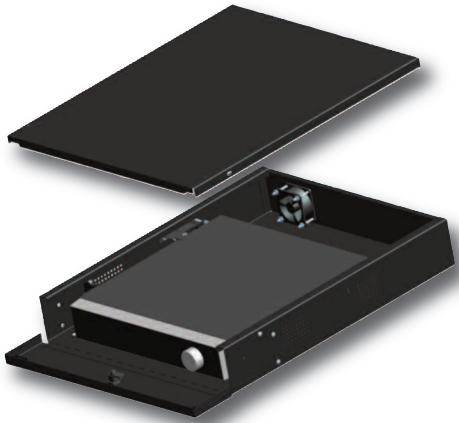
Ganz security lock boxes are custom designed for Digimaster DVRs and PixelMaster NVRs. Constructed from durable American made steel with rugged black powder coat finish, these boxes will prevent unwanted tampering. A security cam lock is provided in the hinged front panel with key that rotates a heavy duty steel tailpiece to securely lock the box. When the front panel is open, the top lid is removable for easy installation and connection of equipment. Multiple cable knock-outs are provided in the rear bottom, and side panels to allow flexibility of cable entry and various mounting positions. An internal fan with metal guard and perforated air flow openings are provided to promote cooling of equipment. Fan can be moved from the rear position to either side based on mounting position to achieve best air flow.

LB-17	Fits DR4HL, NR4HL, NR8HL Series
LB-21	Fits DR4HD, DR8HV, DR16HV Series
LB-24	Fits DR8HD, DR16HD, DR16HRD, NR8H, NR16H Series

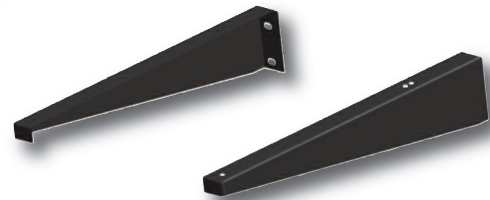
Lock Box Series

Lock Boxes for Digimaster DVRs and PixelMaster NVRs

■ Lock Box with DVR Inside



■ Optional Wall Mount Brackets



Models: LB-WM1721 & LB-WM24

■ Specifications

Model	LB-17	LB-21	LB-24
Fan	115V		
Volts	105 ~ 125VAC		
Current	< 0.15 Amps		< 0.4 Amps
Construction	CR Steel		
External Dimensions	3.5" x 16.2" x 16.7"	3.5" x 17.7" x 21"	5.1" x 20.7" x 23.9"
Usable Dimensions*	3.4" x 14" x 15"	3.4" x 16" x 17"	5" x 19" x 20"

■ Accessories

LB-WM1721	Wall mounting bracket for LB-17 and LB-21 lock boxes
LB-WM24	Wall mounting bracket for LB-24 lock boxes

All specifications are subject to change without notice

■ Note

Standard unit is painted black. Additional colors are available by special order. Optional mounting bracket kits for wall or rack mounting are available. Additional features and modifications can be made by special order. Please contact your Sales Representative or the manufacturer for details in matching the right equipment security solution to the equipment and application being used for best system performance.